

NOTE: - DO NOT SCALE. USE FIGURED DIMENSIONS ONLY  
- THIS DRAWING IS TO BE READ IN CONJUNCTION WITH ALL RELEVANT SPECIFICATIONS AND DRAWINGS.  
- ALL DIMENSIONS TO BE CHECKED ON SITE.  
- IN THE EVENT OF ANY DISCREPANCIES BETWEEN DRAWINGS THE CONTRACTOR IS TO INFORM THE ARCHITECT IMMEDIATELY

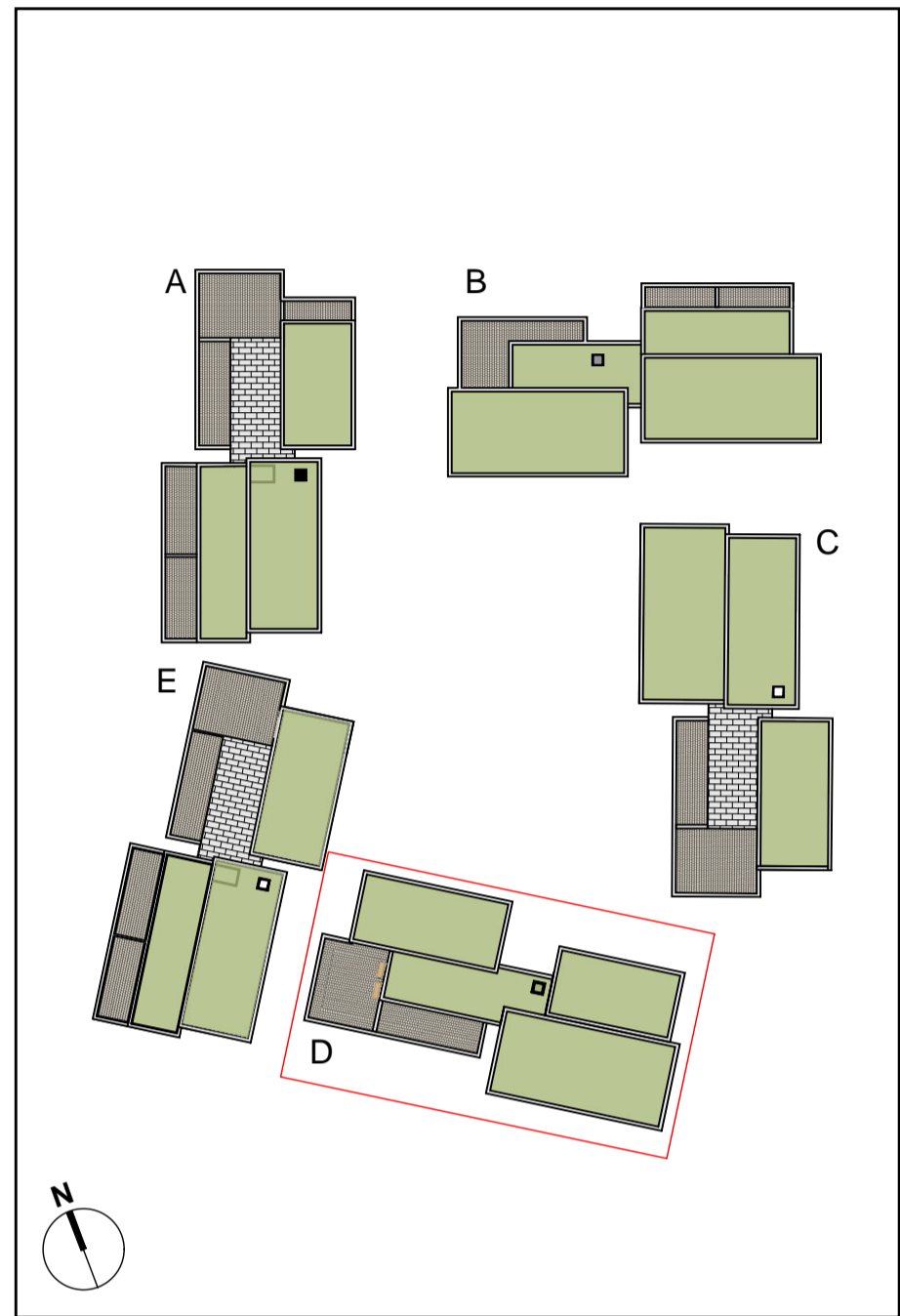
REV	DATE	DESCRIPTION	DRWN	CHKD	APPRD
C	21.07.2014	CLONGRIFFIN B1001	PH	PH	PH
P	21.07.15	ISSUED FOR PLANNING	PH	PH	PH



**B06 - D - SOUTH ELEVATION**  
Scale 1:200



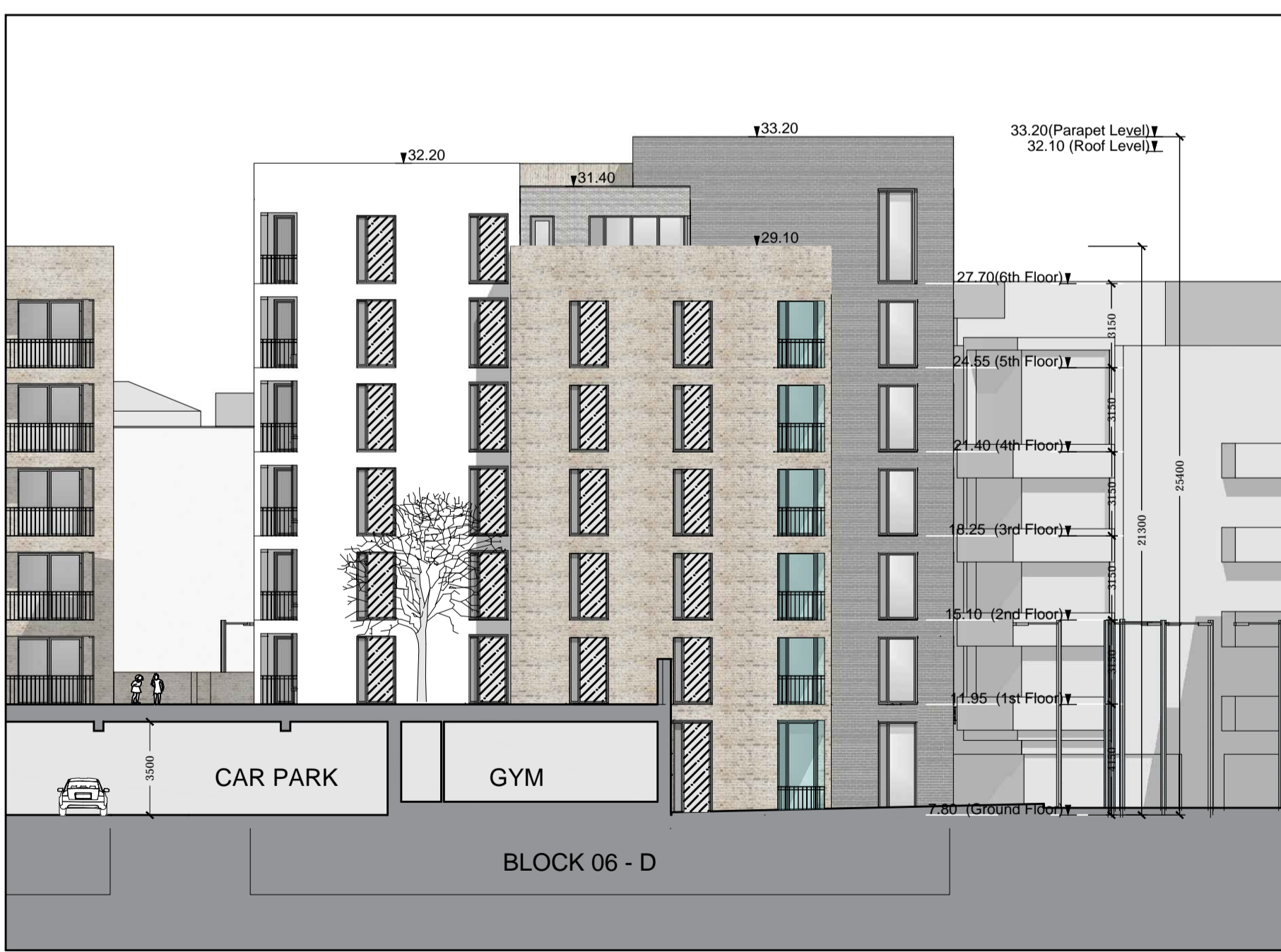
**B06 - D - EAST ELEVATION**  
Scale 1:200



**KEY PLAN**



**B06 - D - NORTH ELEVATION**  
Scale 1:200



**B06 - D - WEST ELEVATION**  
Scale 1:200

- ALL DIMENSIONS IN MILLIMETERS
  - WARDROBES SHOWN IN BEDROOM AREAS ARE NOT COUNTED TOWARD TOTAL STORAGE AREAS.
  - FURNITURE AND FITTINGS SHOWN ARE INDICATIVE
- FOR INFORMATION REGARDING LANDSCAPING REFERENCE:  
RONAN MCDIARMADA & ASSOCIATES LTD.
- FOR INFORMATION REGARDING ENGINEERING REFERENCE:  
WATERMAN MOYLAN ENGINEERING CONSULTANTS.
- INDICATES FINISHED FLOOR LEVEL

- LEGEND:**
- ONE BEDROOM APARTMENTS
  - TWO BEDROOM APARTMENTS
  - ANCILLARY FACILITIES FOR RESIDENTS
  - SITE BOUNDARY
  - OPAQUE GLAZING TO PREVENT OVERLOOKING
  - WIND SCREEN
- MATERIALS LEGEND**
- Materials Legend:
- Brick type A Finish
  - Brick type B Finish
  - White External Plaster Render
  - Glazed Panel
  - Glazed Sliding Door
  - Insulated metal infill panels
  - Insulated metal panel doors
  - Powder coated metal parapets
  - Powder coated metal railings
  - Powder coated balcony fascia